

Red Mountain Trail System

Mary Moore Lookout Trailhead

Follow the



White Markers



Left turn Straight Right turn

Trail Distances:

- Chinkapin Oak* ~ 0.5 miles
- Moore Lookout* ~ 0.7 miles
- Vernal Pool* ~ 2.1 miles
- Hamlin Parking* ~ 2.9 miles

Dogs are permitted on a leash

Leave No Trace. Please keep our preserves clean

Please respect private property

Please stay on the path

Open dawn to dusk

Fires and camping are not permitted

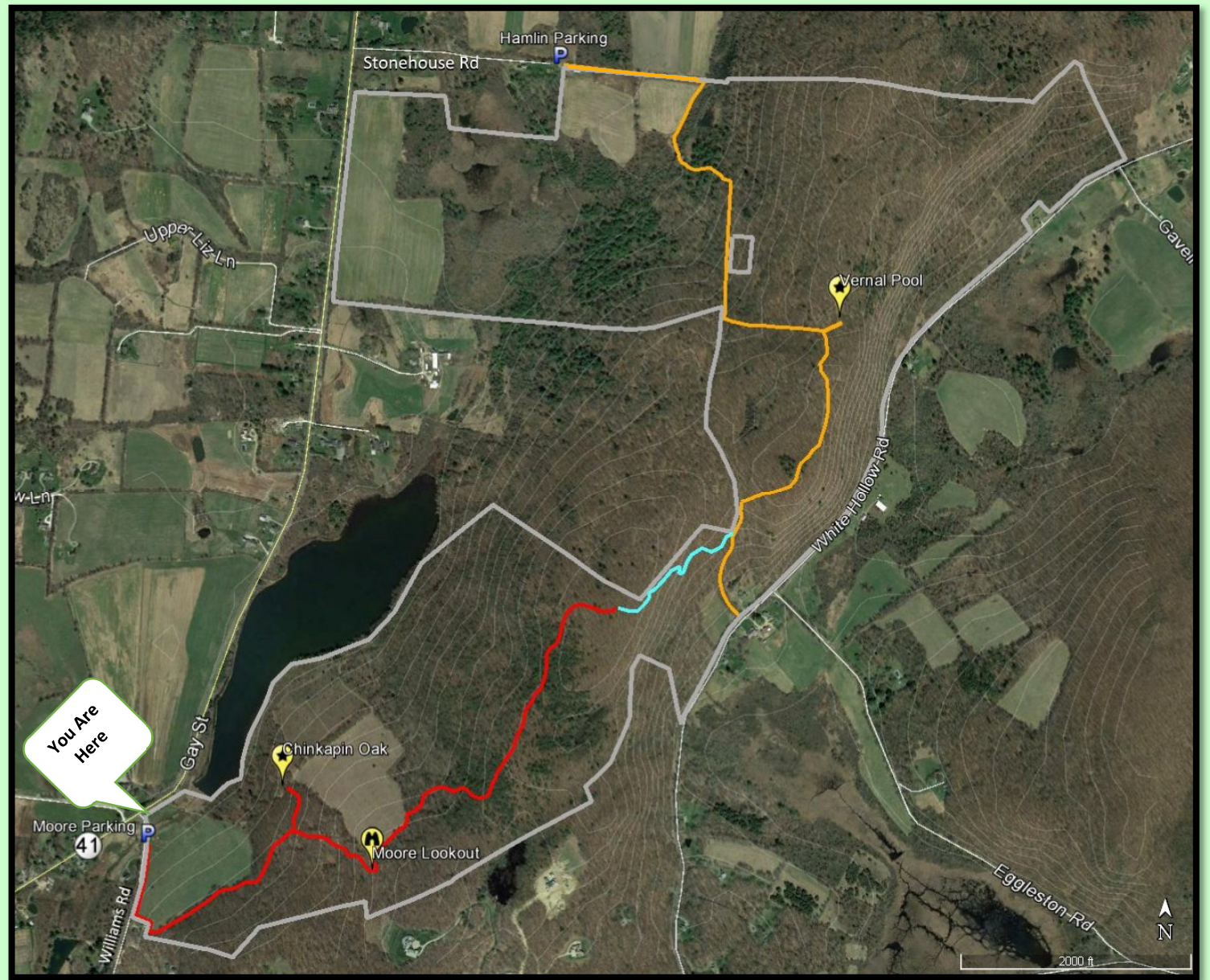
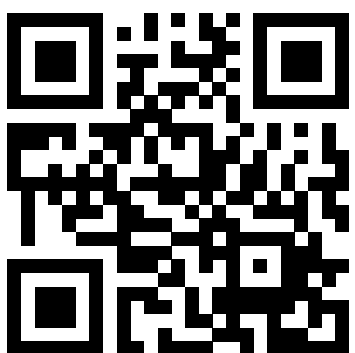
Hunting by permit only

No Motorized vehicles

This trail made possible by generous donations.

Your support keeps Sharon lands protected.

Please consider donating to sharonlandrust.org.
860.364.5137



- Mary Moore Lookout Trail
- Wike Connector Trail
- Hamlin Bear Trail
- Land Trust Contiguous Border
- Topographic Elevation Lines (30ft)

View

Feature

This Trail System travels over three wonderful parcels.

- The **Mary Moore Preserve** ~ 181 acres donated to the Sharon Land Trust in 2013 is on the southwestern reach of the Red Mountain Range adjacent to Beardsley Pond. The parcel includes upland shrub land, advanced meadow, farm pasture, and stream/marsh wetland. The upper meadows and the summit area in the northeastern corner provide exceptional views that encompass three states and rank among the best viewing positions in the Berkshires.
- The **Hamlin Farm Preserve** ~ 259 acres purchased with an Open Space Grant in 2002 consists of two farm fields but primarily forest that ranges from the edge of the farm fields east to the upper reaches of Red Mountain.
- The **Wike Brothers Farm** ~ 268 acre easement purchased by the Sharon Land Trust & the CT Farmland Trust in 2010 & 2014. Funding for the purchase provided by CT DEEP Open Space Grants, Federal Grants, CT Dept. of Agriculture and private donations. Wike Farm is one of Sharon's oldest family farms supporting grass-fed beef, chickens and pigs. This trail system follows the ridge line to connect all parcels.

